

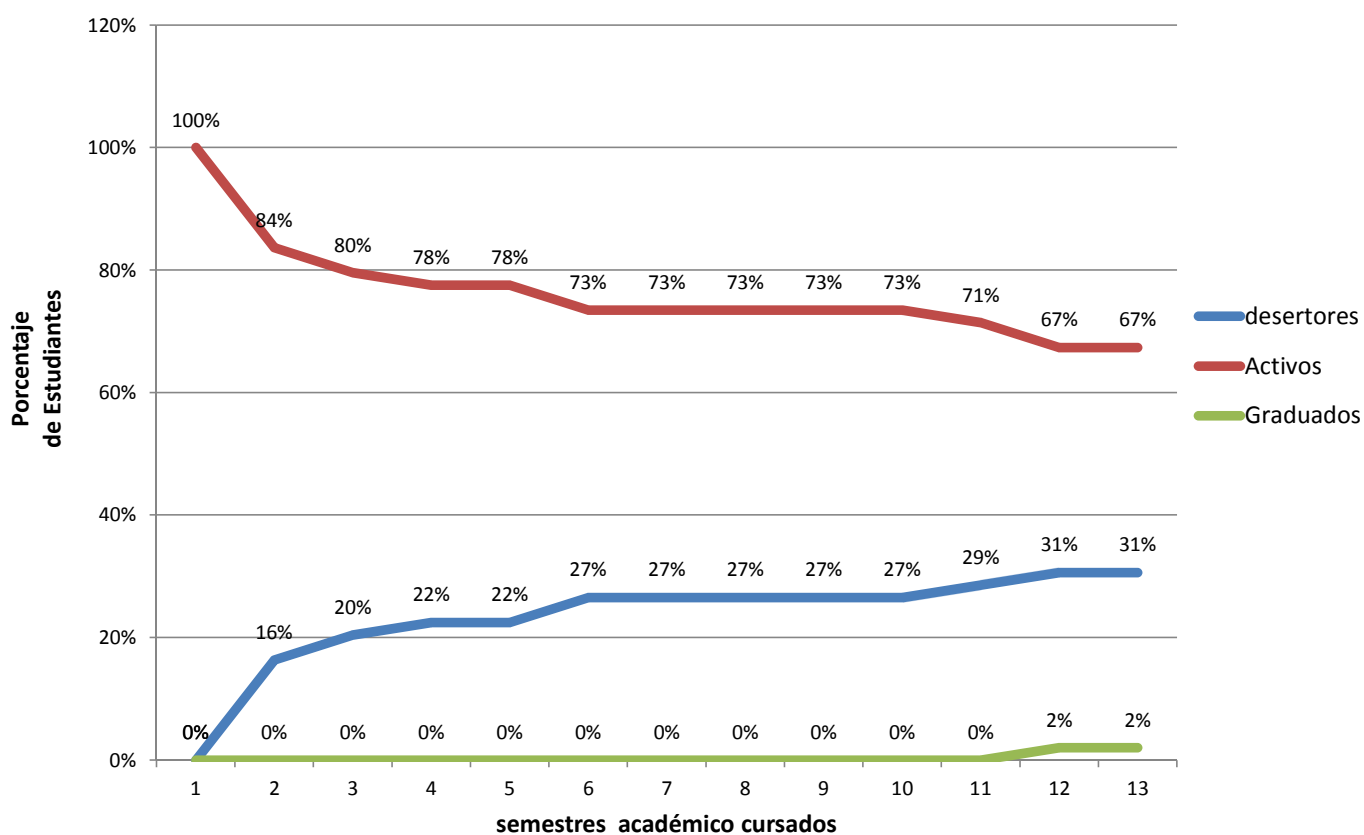


| | | | | | | | | | | | | | |
|-----------------------------|------|-----|-----|-----|-----|-----|-----|-----|-----|-----|-----|-----|-----|
| Desertor acumulado % | 0% | 16% | 20% | 22% | 22% | 27% | 27% | 27% | 27% | 27% | 29% | 31% | 31% |
| Activo % | 100% | 84% | 80% | 78% | 78% | 73% | 73% | 73% | 73% | 73% | 71% | 67% | 67% |
| Graduado acumulado % | 0% | 0% | 0% | 0% | 0% | 0% | 0% | 0% | 0% | 0% | 0% | 2% | 2% |

Licenciatura en Ciencias Sociales

Seguimiento a la deserción estudiantil Cohorte 2004-II

Fuente: Spadies MEN 2010



De todos los estudiantes que ingresaron al programa académico cohorte 2004-II,

31% han desertado

67% aun permanecen activos o matriculados

2% se han graduado